

BarcodeFiler Version 1.5.1

1 Overview

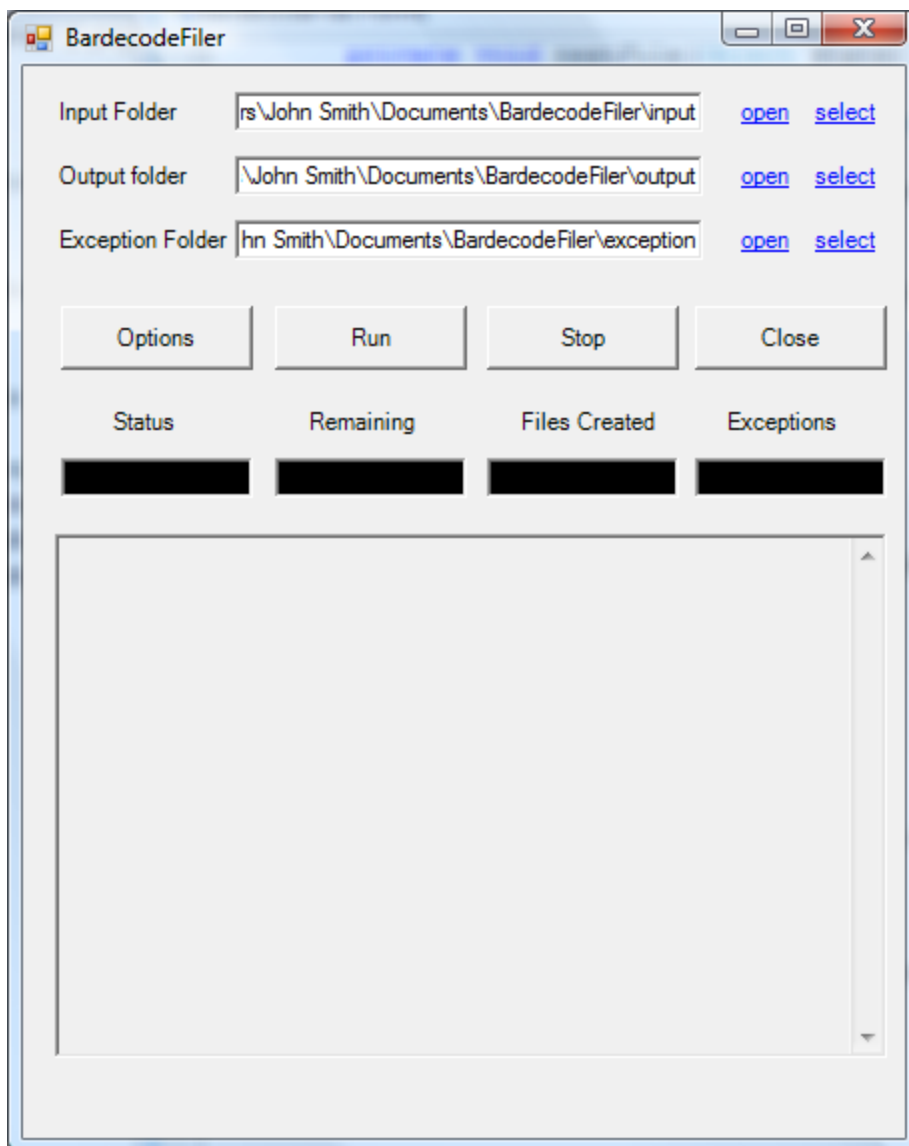
BarcodeFiler is an application that splits and renames TIF and PDF documents according to the barcode values found in the images.

The application reads documents from an input folder and creates new documents in an output folder. The original documents are not modified or deleted. The name of a new document is controlled by a template, which can include the original file name, barcode values and sequence numbers. Documents can either be left whole or split in sub-files according to barcode location.

The application can also be run from the command line – see section 4.

2 Main Window

The main window for the application is shown below:



2.1 Folders

Input Folder

The folder from which the application should read TIF documents.

Output Folder

The folder that the application should use for creating new TIF documents. Note that this should be different to the Input Folder.

Exception Folder

The folder where the application should copy documents that contain no barcode.

Click on the “open” links to browse the contents of the folders.

Click on the “select” links to change the location of the folders.

2.2 Control Buttons

Options

Click on the Options button to display the application settings.

Run

Click on Run to start processing files.

Pause/Continue

Click on Pause to suspend the processing of documents and click on Continue to restart the processing of documents.

Stop

Click on Stop to cancel the processing of documents.

Status Display

Status - shows whether the application is Idle, Running, Paused or Stopped.

Remaining - displays the number of documents to be processed in the input folder.

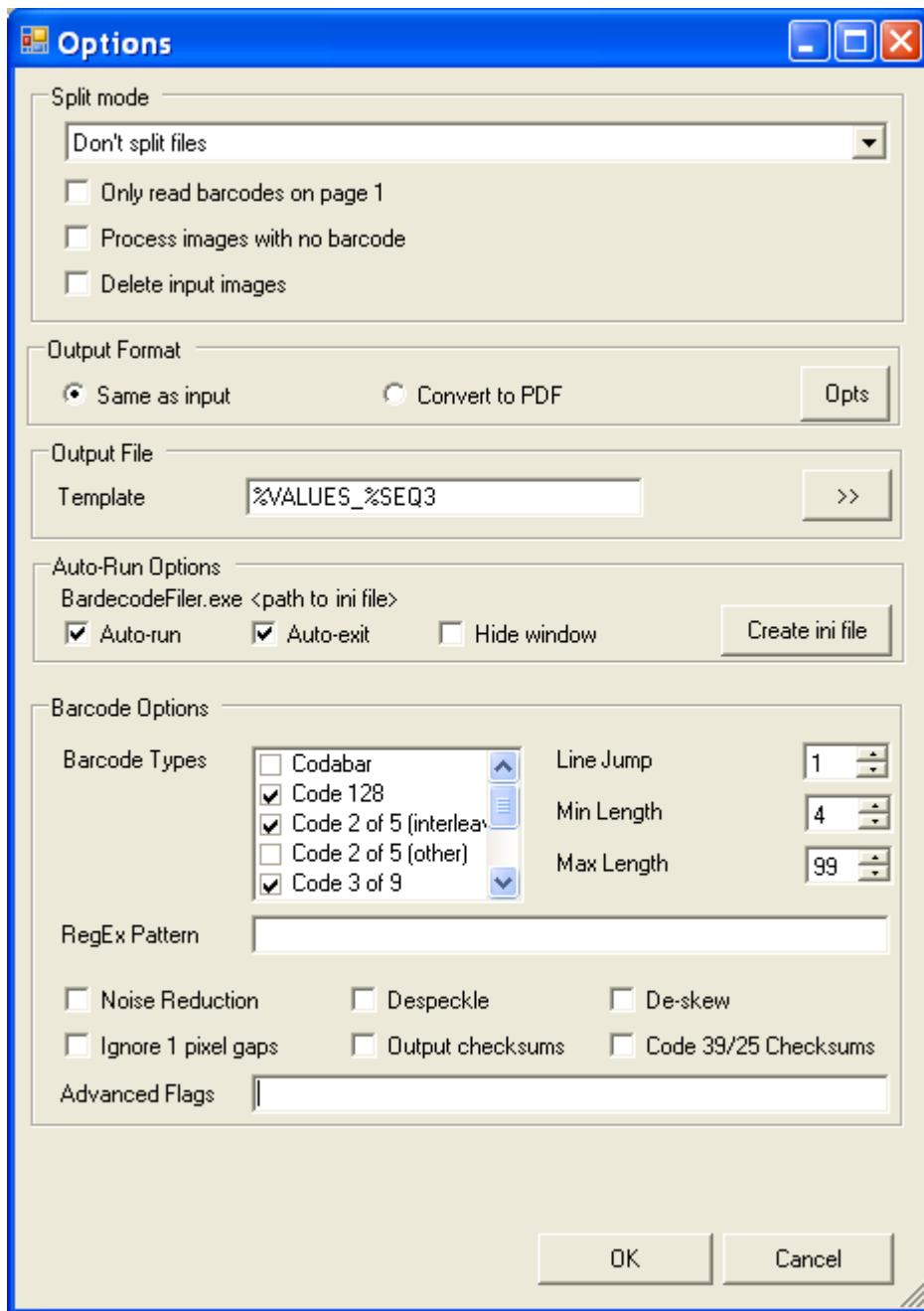
Files Created - displays the number of files created in the output folder.

Exceptions - displays the number of files containing no barcode or copied to the exception folder for some other reason.

The box underneath the status display is used to output messages such as the name of the document currently being processed and the values of the barcodes.

3 Options

The options screen for the application is shown below:



3.1 Split Mode

The application can either create complete copies of input documents in the output folder, or it can use barcodes as page separators and split the input documents into sub-files. The full list of options is as follows:

- **Don't split files** – just rename each input file according to the specified template. If you only want to use barcode values from page 1 then check the box labeled “**Only read barcodes on page 1**”. This will increase the speed when processing multi-page images.
- **Split - barcodes on first page** of the output files.
- **Split - barcodes on last page** of the output files.
- **Split - don't include barcodes** – only output pages between barcodes.
- **Split - only output barcodes** – only output pages containing barcodes.
- **JPG Mode** – see below.

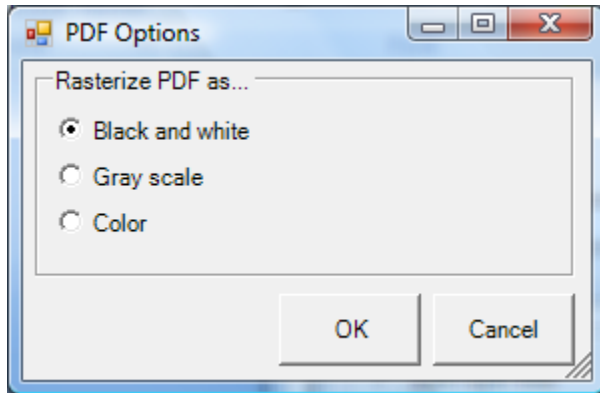
It may be useful to process images containing no barcode into the output folder rather than the exception folder. If this is the case then tick the check box “**Process images containing no barcode**”. If the output template includes %VALUES then it will be replaced by the text “NOBARCODE”.

In **JPG Mode** the application only processes JPG files from the input folder. Files are processed in alphabetic order and the output template name is automatically set to %VALUES_%PAGE. An input file that contains a barcode is copied to the output folder as page 1 using the barcode value found in the file. If the next file contains no barcode then it is copied to the output folder as page 2 using the same barcode value. The process is repeated until a file is found to contain a barcode value, in which case it is used as page 1 and the process repeats.

Check “**Delete input images**” to delete images from the input folder as they are processed.

3.2 Output Format

BarcodeFile can either output files in the same format as the source files or it can convert all files to PDF. Click on the **Opts** button to display the PDF Options dialog:



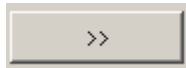
All PDF documents that need to be split are rasterized in the format given in the above dialog. PDF documents that only need to be renamed are not rasterized.

3.3 Output File Template

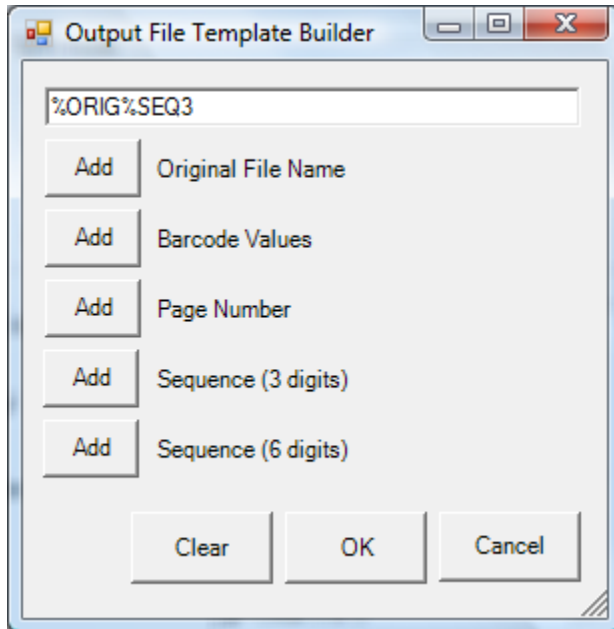
The output file template controls the way in which new file names are allocated. The template can contain any valid file name characters, with the following keywords being replaced as follows:

- | | |
|----------------|---|
| %ORIG | is replaced by the name of the corresponding input file. |
| %VALUES | is replaced by the barcode values found in the input file that are relevant to the output file. |
| %PAGE | is replaced by the separator page number in the input file. |
| %SEQ3 | is replaced by a 3 digit number that ensures the new file has a unique file name. |
| %SEQ6 | is replaced by a 6 digit number that ensures the new file has a unique file name. |

To open a tool to help build the output file template please click on the button to the right of the field, as shown below:



This opens up the following window:



The File Template Builder displays the current value for the template at the top of the window. Use the "Add" buttons to append the appropriate keywords to the template and click OK or Cancel to exit.

3.4 Auto-Run Options

Please refer to section 4 for more details.

3.5 Barcode Types

The application can search for barcodes of type Codabar, Code 128, Code 2 of 5, Code 3 of 9, PDF-417, EAN-13, UPC-A, EAN-8 and UPC-E.

3.6 RegEx Pattern

The RegExPattern field specifies a regular expression that the application should use when searching for barcode. Any barcode that doesn't match the regular expression will be ignored.

Examples:

ABC[0-9]+ will match any barcode containing the string ABC followed by 1 or more digits.

^ABC[0-9]+\$ will match any barcode that starts with the string ABC followed only by 1 or more digits.

For further information on regular expressions please refer to <http://www.regular-expressions.info/>

3.7 Other Barcode Reading Settings

Min Length is the smallest length of barcode to be recognized.

Max Length is the largest length of barcode to be recognized.

LineJump is the frequency at which scan lines in an image are sampled. Higher values are faster.

Noise Reduction should be ticked if the images contains small black marks in the spaces between bars.

Despeckle should be ticked if the images also contains small white marks in the black bars.

Ignore 1 Pixel Gaps should be ticked if the images contains tiny white marks in the black bars but no black marks in the spaces.

De-Skew should be ticked if the images contain skewed barcodes. Note that this slows down recognition of the barcodes.

Output Checksums should be ticked if the checksum characters from barcodes need to be included in the barcode values.

Code 39/Code 25 Checksums should be ticked if the Code 3 of 9 and Code 2 of 5 barcodes are using checksum characters.

Advanced Flags give access to the underlying options in the barcode reading engine and should be set on advice by BardecodeFiler support.

3.8 Trial Version Key

It's possible to prevent pop-up boxes from appearing in the evaluation version by requesting a Trial Version Key from sales@bardecode.com. The supplied key normally lasts for 30 days.

4. Running BardecodeFiler from the Command Line

The BardecodeFiler application can also be called from the command line and within scripts. There are options to auto-start, auto-exit and to hide the application while it runs.

To work in this mode the application needs to be called as follows:

```
BardecodeFiler.exe <path to ini file>
```

Where the ini file is created by clicking on the "Create ini file" button.

e.g.

```
BardecodeFiler.exe c:\files\bardecodefiler.ini
```

The following options apply:

Auto-Run - automatically process files from the input folder.

Auto-Exit - automatically exit after processing the input folder.

Hide window – minimize application and remove from task bar whilst processing files.

Note that if **Hide window** is checked then **Auto-Run** and **Auto-Exit** will both be checked, and conversely, if either **Auto-Run** or **Auto-Exit** is un-checked then **Hide window** will also be un-checked.

5 Purchase Information

The BardecodeFiler application starts at US\$249 for one copy and can be purchased from the following URL:

<https://secure.webhoster.co.uk/secure.bardecode.com/store.php>

6 Release Notes

Version 1.5.2

Added Advanced Flags option.

Version 1.5.1

Added support for processing jpg files (see section 3.1 for more detail).

Enhanced output saved to log file.

Replaced “split-mode” radio buttons in options with drop down list box.

Version 1.4.4

Removed reliance on Visual C++ redistributable package, which also means that the application will now work on x64 systems.

Added option to only process barcodes on page 1 of input file.

Added the full stop character to the list of acceptable characters for the output file name.

Version 1.4.2

Changed auto-run to also use one argument – the path to an ini file, which can be created by clicking on the “Create ini file” button.

Added option to only split out pages containing a barcode.

Version 1.3.2

Corrected error in the creation of the output file path, which resulted in two “.” characters before the file extension.

Version 1.3.1

Added color depth options for PDF output.

Version 1.3

This version is capable of handling TIF and PDF files, and can also output in either the original format, or convert to PDF.

Changed buttons for selecting input, output and exception folders to links and added links to allow the user to browse the contents of the folders.

Added “Output Format” section in the Options dialog.

Fixed some logic errors splitting files with no barcode on page 1.

Added option to process files containing no barcode into the output folder.

Added option to delete input files as they are processed.

Version 1.2.1

Changed behavior when an output file already exists and the template does not include a sequence number. Previous versions would report the error and halt processing where as this version will copy the input file to the exception folder and continue processing.

Version 1.2

Added ability to auto-run from command line. Options to auto-start, auto-exit and to hide the window when running.

Added Line-Jump option to control speed of execution.

Added field for user to enter a trial license key.

Version 1.1

First release